



# Discovery Camp

## Rules

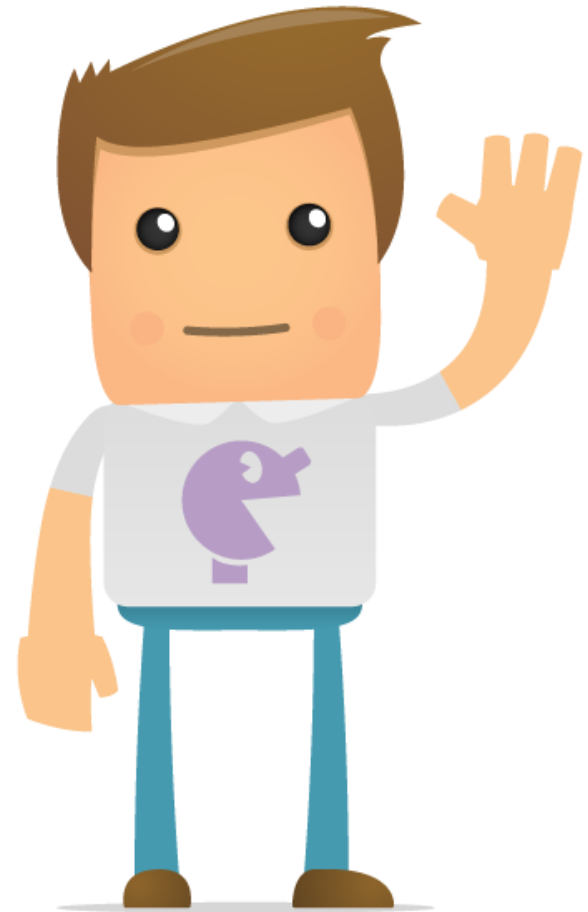
If you see a dog,  
stand still, drop  
your stick and put  
your hands in your  
pockets.



Don't go beyond  
the camp



Strangers Rule...  
Say hello or wave  
but don't go  
anywhere with  
them.



If you get lost, stand  
still and shout:  
“1, 2, 3, where are  
you?”



Deep mud.  
Line up and  
walk in single  
file, one at a  
time.



If you hear the  
whistle return  
to base camp



If you see  
rubbish tell an  
adult and don't  
touch it.





Don't touch  
berries and fungi



If you see Dog poo  
then shout:

“Dog poo” to warn  
everyone.

Walk around it.  
Don't touch it.

